



# Scouts on Stamps



## Boy Scouts 75th Anniversary

For seventy-five years, Scouting has shaped today's youth into tomorrow's leaders.



Boy Scouts

USA



FIRST DAY OF ISSUE

## Boy Scouts of America Stamp Collecting Merit Badge

Gordon R. "Rock" Knutson  
Merit Badge Counselor

SOSSI    APS    AAMS

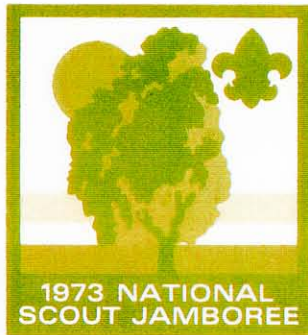


# Scouts on Stamps



## JAMBOREE EAST

Moraine State Park, Pa.  
Aug. 3-9, 1973



1973 NATIONAL  
SCOUT JAMBOREE

OFFICIAL  
Opening Day Cachet  
by

S.O.S.S.I.

Scouts on Stamps Society Int.



FIRST DAY OF ISSUE

Boy Scouts of America  
Stamp Collecting Merit Badge

**Boy Scouts of America  
Stamp Collecting Merit Badge**

---

Requirement 1. a.

Discuss how you can better understand people, places, institutions, history, and geography as a result of collecting stamps.

A study into the Cape of Good Hope Maefeking Siege Issues leads to knowledge of the 19th century English expeditionary forces, the Boer War in South Africa, and Lord Robert Stephenson Smyth Baden-Powell, founder of the Boy Scouts.



Cape of Good Hope # 178, 180, 179

Requirement 1. b.

Briefly describe some aspects of the history, growth, and development of the United States postal system. How is it different from postal systems in other countries.

This discussion varies depending upon the age & knowledge of the scout. Idea prompts shown.



"PAID" hand stamped cover  
Hand written valentine verse  
dated "Feb 14th 1860" inside



US # C1 1918  
First official air mail



US # 2419 1989  
2 lbs / 2 days air freight

## Boy Scouts of America Stamp Collecting Merit Badge

### Requirement 3

Show at least one example of each of the following:

#### Perforate Stamp

Lines of small holes punched between individual stamps to make it easy to separate them.



Philippines # 528a

#### Imperforate Stamp

Not perforated, cut apart with knives or sissors.



Philippines # 528

#### Mint

A stamp in the new and fresh condition in which it left the printers.



Australia # 248

#### Used

A stamp which has been postally used, and defaced to prevent further use.



Australia # 248

#### Booklet Stamp

Printed in sheets and cut into small panes of 8 or 10 stamps before perforating; will be imperforate on one or two adjacent sides.



USPS # 6619N

Boy Scouts of America  
Stamp Collecting Merit Badge

Requirement 3 (Cont'd)  
Sheet

Stamps are normally printed in sheets and separated by perforations.



36640

1J 1J 1J 1J

THOMAS DE LA RUE & CO. LTD.

Guyana M886-M890 Commemorating the death of Lord Baden-Powell

**Boy Scouts of America  
Stamp Collecting Merit Badge**

**Requirement 3 (Cont'd)**

**Plate # Block**

Note the numbers in the margins of the booklet pane and the sheet on preceding pages and the block below. The numbers are used to identify the printing plates and the color press runs.



US # 1194

**Coil Stamp**

Printed in sheets and then cut into long strips before perforating; will be imperforate on parallel edges.



US # C83

**Metered Mail**

Postage printed onto the envelope by a machine which is preset for a total amount at the post office.



## Boy Scouts of America Stamp Collecting Merit Badge

### Requirement 3 (Cont'd)

#### Definitive

Regular postage stamps issued in a series to accommodate the current postage rates for various classes of mail.



US # 829

#### Commemorative

Stamps which are issued to honor a special event or person.



Netherlands # 206

#### Semipostal

Stamps bearing an additional surcharge; the proceeds from the surcharge are given to a charity.



New Zealand B25

#### Airmail

Stamps used to prepay postage on mail which is carried by air.



Liberia # C164

#### Postage Due

Stamps indicating that postage not paid by the sender is due from the recipient.



US # J 52

#### Envelope

Envelopes with the stamp printed or embossed directly on them.



US # U348

**Boy Scouts of America  
Stamp Collecting Merit Badge**

**Requirement 3 (Cont'd)**

**Overprint & Surcharge**

Any wording or device which alters the original appearance of the stamp; surcharge is an overprint that alters the face value of the stamp.



Philippines # 832

**Cancellation**

Any device or set of lines which defaces the stamp to prevent any further postal use of it.



United States # 995

**Postmark**

A specific type of cancellation, also known as a "city-date stamp" which shows where and when the stamp was cancelled



Columbia # C437

**Precancel,**

Ordinary postage stamps on which the name of the town is printed prior to being sold; used for bulk mailing.



US # 622

**Special Delivery,**

Stamps which call for immediate delivery of the mail upon receipt at the post office.



Italy # E5

**Revenue,**

Stamps issued as receipts to show a payment of a tax.



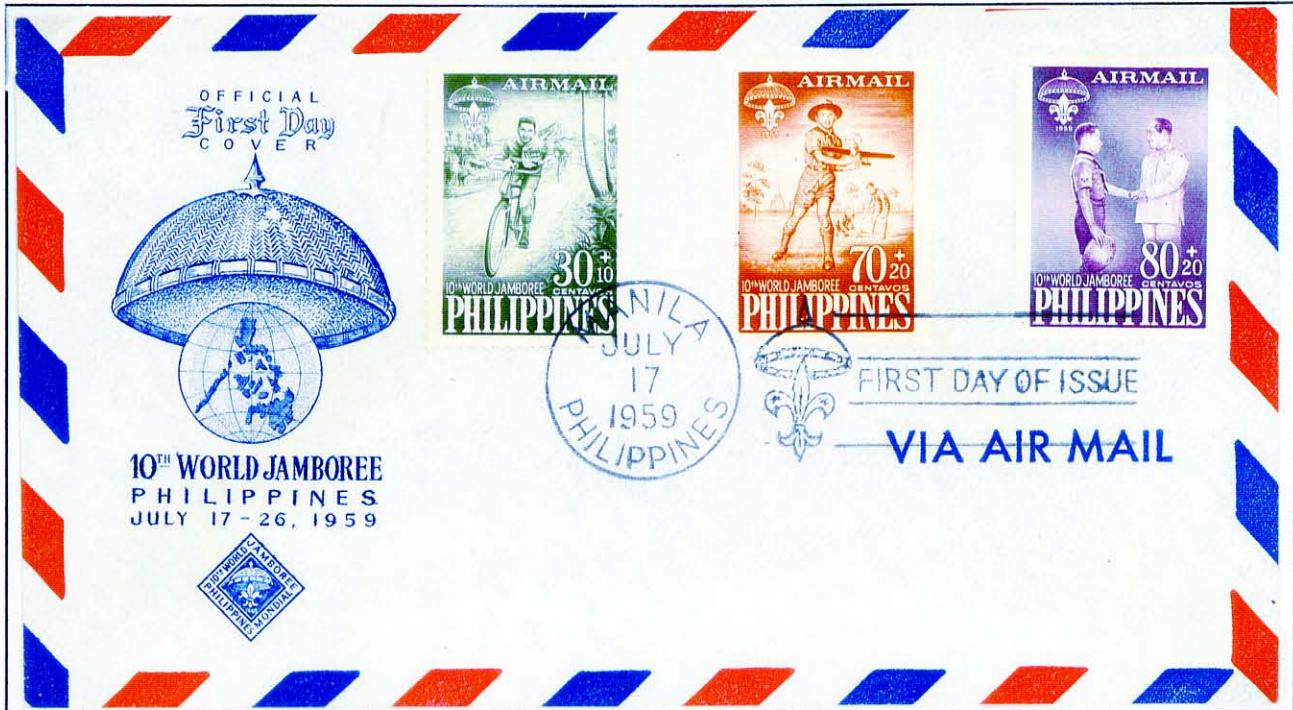
Iowa  
(no Scott #)



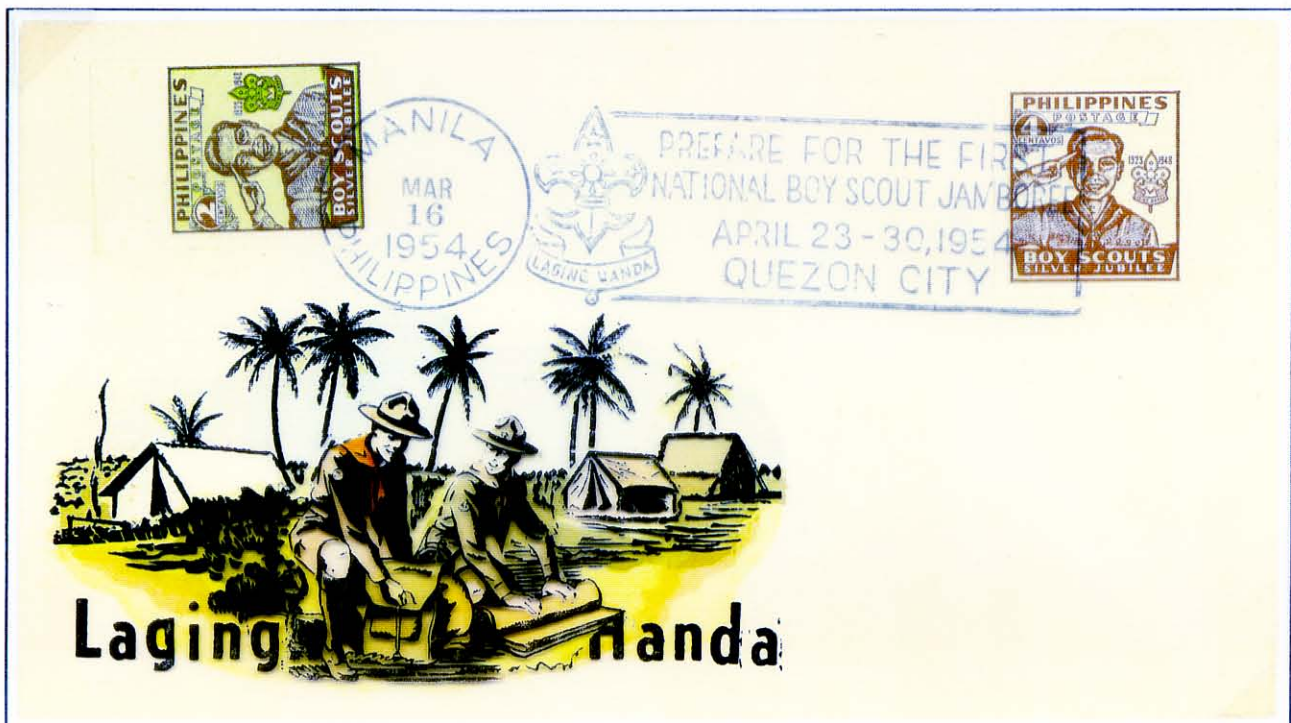
**Boy Scouts of America  
Stamp Collecting Merit Badge**

**First Day Cover**

A cover is an envelope that has gone through the mail and has the stamp still on it. A First Day Cover is a cover with the cancel applied on the first day of issue of the stamp so cancelled.



Philippines # CB-1, CB-2, CB-3 First Day of Issue



Philippines # 528 & 529; First day of use of Scout Cancellation

# Boy Scouts of America Stamp Collecting Merit Badge

## Requirement 4. a.

Demonstrate the use of one standard catalog for several different stamp issues.  
Explain why catalog value can vary from the corresponding purchase price.

### BAVARIA—BELGIUM

Similar Overprint. Words 8mm. apart.

O64	O4	1m dark brown	5	5
O65	"	1 1/2m green	5	5
O66	"	1 1/2m vermilion	5	5
O67	"	2 1/2m deep blue	8	8
O68	"	3m dark red	8	8
O69	"	5m black	2.00	2.00

Nos. O62 to O69 could be used in all parts of Germany, but were almost exclusively used in Bavaria.

#### BELGIAN EAST AFRICA (See Ruanda-Urundi.)

#### BELGIUM (bél'jī-ām)

**LOCATION**—In western Europe, bordering on the North Sea.  
**GOVT.**—Constitutional Monarchy.  
**AREA**—11,775 sq. mi.  
**POP.**—9,221,000 (est. 1962).  
**CAPITAL**—Brussels.  
**100 Centimes = 1 Franc**

Prices of early Belgian stamps vary according to condition. Quotations for Nos. 1-12 are for fine copies. Very fine to superb specimens sell at much higher prices, and inferior or poor copies sell at reduced prices, depending on the condition of the individual specimen.

Prices for unused stamps of 1849-1863 issues are for copies with original gum. Copies without gum sell for about half the figures quoted.



King Leopold I  
A1 A2



Wmk. 96

Wmkd. Two "L's" Framed. (96)  
1849 Engraved. **3** Imperf.

1	A1	10c brown	150.00	11.00
		a. 10c red brown	300.00	65.00
2	"	20c blue	600.00	10.00
		a. 20c milky blue	1000.00	27.50

The reprints are on thick and thin wove and thick laid paper unwatermarked.

1849-50	—	<b>2</b>		
3	A2	10c brown (50)	275.00	10.00
4	"	20c blue (50)	285.00	9.00
		a. Half used as 10c on cover	325.00	
5	"	40c carmine rose	275.00	40.00

#### 1858-61 **5A** Unwmkd.

9	A2	1c green (61)	35.00	22.50
		a. Last paper		
10	"	10c brown	55.00	1.00
11	"	20c blue	55.00	1.00
12	"	40c carmine rose	375.00	16.50

Nos. 9 and 13 were valid for postage on newspapers and printed matter only.

Reprints of Nos. 9 to 12 are on thin wove paper. The colors are brighter than those of the originals. They were made from the dies and show lines outside the stamps.

#### 1863 **4** Perf. 12 1/2, 12 1/2 x 13, 12 1/2 x 13 1/2, and 14 1/2

13	A2	1c green	7.50	5.75
14	"	10c brown	12.50	45
15	"	20c blue	12.50	45
16	"	40c carmine rose	75.00	5.00



King Leopold I  
A3 A3a



A4 A4a



A5

#### **3A** London Print. **4B** Typographed. Perf. 11.

E A5 1fr pale violet 90.00 17.50

Brussels Print.

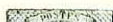
Thick or Thin Paper.

#### 1863-66 **5** Perf. 15 and 14 1/2 x 11.

18	A3	10c slate (66)	13.00	20
		a. Imperf.	20.00	20.00
		b. Pair, imperf.		65.00
		between		65.00
19	A3a	20c blue (66)	13.00	20
		a. 20c blue blue	13.00	20
		b. Imperf.	30.00	30.00
20	A4	30c brown	27.50	85
		a. Pair, imperf.		15.00
		between		30.00
		b. Imperf.	30.00	25.00
21	A4a	40c rose (66)	35.00	1.40
		a. Imperf.	45.00	20.00
22	A5	1fr violet	85.00	15.00
		a. Imperf.	60.00	

Nos. 18 to 22 on thin paper are perf. 14 1/2 x 11; on thick paper, perf. 15.

The reprints are on thin paper, imperforate and unwatermarked.



#### Perf. 15 and 14 1/2 x 11.

24	A6	1c gray	4.50	2.00
25	"	2c blue (67)	22.50	16.00
		a. 2c ultramarine	25.00	16.00
26	"	5c brown	20.00	14.00

Nos. 24-26 were valid for postage on newspapers and printed matter only.

Nos. 24 to 26 on thin paper are perf. 14 1/2 x 11; on thick paper, perf. 15.

Reprints of Nos. 24 to 26 are on thin paper, imperforate and unwatermarked.



King Leopold II  
A7 A8



A9 A10



A11 A12

#### 1869-70 **8** Perf. 13.

28	A7	1c green	1.25	6
		a. Imperf.	15.00	
29	"	2c ultramarine (70)	1.50	8
		a. Imperf.	20.00	
30	"	5c buff (70)	7.00	8
		a. Imperf.	20.00	
31	"	8c lilac (70)	17.50	13.00
32	A8	10c green	3.50	4
		a. Imperf.	25.00	
33	A9	20c light ultra. (70)	15.00	20
34	A10	30c buff (70)	15.00	1.00
		a. Imperf.	30.00	
35	A11	40c bright rose (70)	20.00	1.35
		a. Imperf.	130.00	
36	A12	1fr dull lilac (70)	27.50	4.00
		a. 1fr rose lilac	35.00	5.00
		b. Imperf.	120.00	

Minor "broken letter" varieties exist on several values.

Imperf. varieties of 1869-1912 (one-tween Nos. 28-103) are without gum.

See also Nos. 40-43, 49-51, 55.



A13 A14 A15

#### 1875-78

37	A13	25c olive bistre	13.00	15
		a. 25c ochre	13.00	15
		b. Imperf.	20.00	
38	A14	50c gray	20.00	1.25
		a. 50c gray black	30.00	11.00
39	A15	1fr pale brown	400.00	100.00
		a. 1fr deep red brown	160.00	110.00
		Roller cancel		40.00

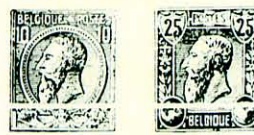


King Leopold II  
A16 A17



A18 A19

1883	45	A16	10c carmine	2.50	15
			a. Imperf.	4.00	
46	A17	20c gray	14.00	40	
			a. Imperf.	5.00	
47	A18	25c blue	25.00	4.50	
			a. Imperf.	5.00	1.00
			Roller cancel		
48	A19	50c violet	20.00	3.50	
			a. Imperf.	7.50	
			Roller cancel		85



A20 A21



A22

#### 1884-85 **9** Perf. 14.

49	A7	1c olive green	85	10
50	"	1c gray	30	5
		a. Imperf.	6.00	
51	"	5c green	1.50	5
		a. Imperf.	40.00	
52	A20	10c rose, bluish	60	4
		a. Grayish paper	1.00	1.00
		b. Imperf.	20.00	
		c. Yellowish paper	17.50	1.25
53	A21	25c blue, pink (85)	1.00	5
		a. Imperf.	170.00	
54	A22	1fr brown, greenish	35.00	1.00
		a. Imperf.	40.00	

The frame and inscription of No. 51 differ slightly from the illustration. See note after No. 36.



A23 A24



**Boy Scouts of America  
Stamp Collecting Merit Badge**

---

Requirement 4. a. (Cont'd)

1. Illustration & Key Number of the design. Wherever this same number/ letter combination appears, the picture on the stamp will be the same even though it may be used several years later. The color or face value may change, but the design will not. (1A)
2. Year of issue.
3. Printing Process. Applies to all stamps following, until a change is indicated. (3A)
4. Perforation. One figure indicates the same perforation on all four sides. Two figures indicate first the horizontal (top & bottom) and second the vertical (sides). (4A)
5. Watermark with Reference Number. As with printing processes, perforation and watermark apply to all stamps following until a change is indicated. (4B & 5A)
6. Identification Number for this stamp in this catalog. Belgium, Scott # 28.
7. Face Value at time and place of issue.
8. Color in which the stamp was printed.
9. Current catalog values at the time and place the catalog was printed. First number is for unused; second is for used.
10. Specific variations are also listed. Scott # 36a is a color variety.

BELGIUM



28



32



50



52



53

**Boy Scouts of America  
Stamp Collecting Merit Badge**

Requirement 4. b.

Explain the meaning of the term **condition** as used to describe a stamp. Show examples that illustrate the different factors that affect a stamp's value.



Off-Center



US # 213



Torn



Perforation  
Incomplete



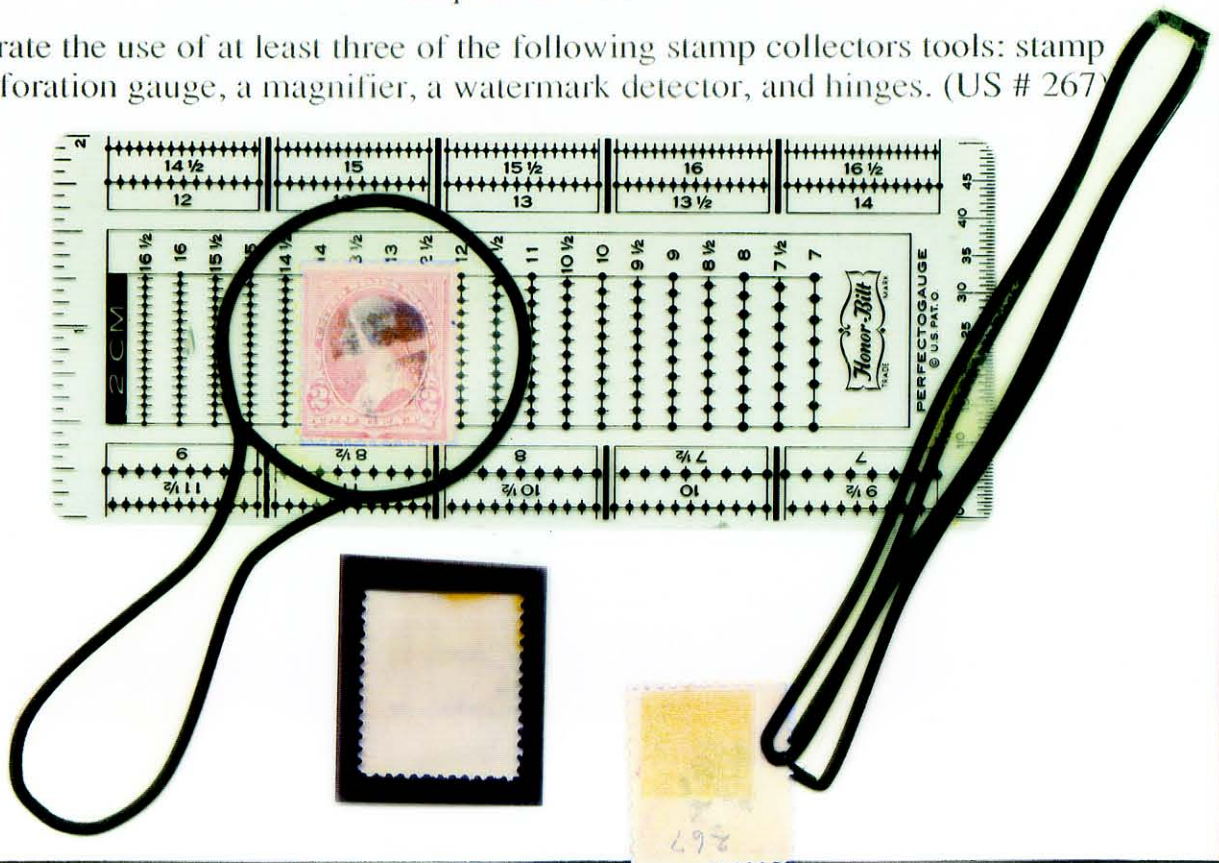
Poor  
Cancel



Soiled

Requirement 5.

Demonstrate the use of at least three of the following stamp collectors tools: stamp tongs, perforation gauge, a magnifier, a watermark detector, and hinges. (US # 267)



**Boy Scouts of America**  
**Stamp Collecting Merit Badge**

---

Requirement 2.

Describe topical stamp collecting. What are some other types of stamp collections?

A topical stamp collection contains stamps from all countries, but of one subject, e.g., Scouts on Stamps. Other types of collections could include stamps from a particular country or group of countries, e.g., French Colonies; stamps on cover with historical significance, e.g., Airport Dedications; stamps and covers depicting particular modes of transportation, e.g., Zeppelins; non-postal usage, commonly called "back-of-the-book"; or all possible plate positions of one stamp, e.g., "Penny Blacks".

Requirement 6. a.

Show a stamp album and how to mount stamps with or without hinges. Show at least one page that displays several stamps.

This display demonstrates this requirement. Stamps and covers are mounted with hinges, hingeless mounts, and corner tabs.

Requirement 6. b.

Discuss at least three ways you can help to preserve stamps, covers, and albums in first-class condition.

Topics for discussion could include the various mounting systems, using acid free paper for album pages, slip cases for albums, etc.

Requirement 7.

Do at least two of the following:

- a. Design a stamp, cancellation, or cachet.
- b. Visit a post office, stamp club, or stamp show with an experienced collector. Explain what you saw and/or did.
- c. Write a review of an interesting article from a stamp newspaper, magazine, or book.
- d. Research and report on a famous stamp-related personality or the history behind a particular stamp.
- e. Describe the steps taken to produce a stamp. Include the methods of printing, types of paper, perforation styles, and how they are gummed.
- f. Prepare a two- to three-page display involving stamps. Using ingenuity, as well as clippings, drawings, etc., tell a story about the stamps. How do they relate to history, geography, or a favorite topic of yours?

This display demonstrates some of the above, including the fact that you are attending this show and will undoubtedly discuss what you are seeing with another experienced stamp collector.

## Boy Scouts of America Stamp Collecting Merit Badge

### Requirement 8

Mount and show, in a purchased or homemade album, one of the following:

- a. A collection of 250 or more different stamps from at least 15 countries;
- b. A collection of a stamp from each of 50 different countries, mounted on maps to show the location of each;
- c. A collection of 100 or more different stamps from either one country or a group of closely related countries;
- d. A collection of 75 or more different stamps on a single topic. Stamps may be from different countries;
- e. Monitor the mail you and your family receive over a period of thirty days. Make a collection of postal items discovered in your mail. Include at least five different types listed in requirement 3, above.

Item e. was added to this requirement when the merit badge requirements were revised in 1993. It has proved to be a stimulus to many boys to start collecting.

The following is excerpted from my topical Scouts on Stamps collection that I use as an example for this requirement.



Pakistan # 121

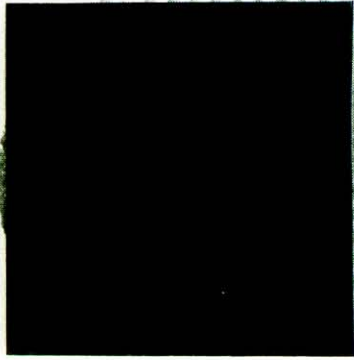
**Boy Scouts of America  
Stamp Collecting Merit Badge**

**Very Special Delivery**

**1918 Czechoslovakia Scout Post**



During the 1918 Czechoslovakia revolution, the Boy Scouts were enlisted by the provisional government to carry the mail. Two special "Scout Post" issues were printed, 10 heller, blue, and 20 heller, red. The stamps were required on all letters and printed matter. Each item was hand delivered and signed by the recipient or the scout who delivered it. This is a philatelic cover using both issues; however, it is properly canceled, face stamped, and signed by the recipient.



## Cape of Good Hope

APRIL 1900

(Mafeking Siege Issues)

April 7: #179. Baden-Powell. 3 pence

April 10: #178. Goodyear on Cycle.

1 penny

April 10: #180. Baden-Powell. 3 pence

Seven years before the Boy Scouts program was originated by Sir Robert Baden-Powell of England, there took place in South Africa the Boer War. It was here that Col. Baden-Powell defended the town of Mafeking against great odds and many hardships, so that after a siege of 219 days he became the successful hero of Great Britain. Using boys in Mafeking for postal and messenger service, they were formed into a Cadet Corps led by a youth known as Cadet Sergeant-Major Warner Goodyear. Years later "B-P" referred to Goodyear as his first boy Scout. Here the founder of the Scout movement realized the ability and interest of youth in a program of camping skills, first aid and service to others.



The stamps were urgently needed in the besieged town for local mail, and engraving was not available. Captain Greener designed the Baden-Powell stamp from a photograph by D. Taylor who also was the official printer of the stamps using a "blue-print" method called the ferro-prussiate process. Exposing the glass plate negatives to sunlight caused various shades of blue in the sheets of twelve stamps. The first Baden-Powell 3d stamps measured 18½ mm. The 1d Cyclist stamp was somewhat larger. When the cyclist design for the 1d value was submitted by Dr. Will Hayes, he retouched the background of houses, and added the frame, scrolls and inscription. The larger size cyclist stamp showed better detail than the original smaller Baden-Powell stamp, so production was stopped on the smaller BP stamp and the larger 21mm stamp replaced it.

Scott No.	Quantity
#178 Goodyear	9,476
#179 (Small) B-P	6,072
#180 (Large) B-P	3,036

While intended for local mail only, many of the stamps were used for mail outside when native runners could get through the enemy lines. Stamps still on the original envelopes are rare auction items today.



Photograph from which the stamp was made.



## Czechoslovakia

NOVEMBER 7, 1918

#1-4. (Zumstein)

10 haleru. Blue; 20 haleru. Red

The Sea Scouts provided postal service from November 7 to 25, 1918, for the National Committee of Liberation, while their country was having a new birth of freedom. Under the leadership of their Chief Scout, Roessler Orovsky, official mail was distributed between the city hall, police, parliament, and the railroad station in the capital city, Prague. An ingenious method of producing the stamps for this service involved printing from a typographed plate with the perforations and the embossing all made in the same impression. This accounts for the outline of color seen on the perforations. The top inscription means "Czech Scout Post"; the lower means "In the Service of the National Government." Cancellation "N. V." in a circle is "National Committee." Cancel "Posta Skautu" is "Scouts Post" in black, violet and red inks. Produced from single dies there are no genuine pairs or blocks. The 10h was for post cards and the 20h for letters with the Scout collecting the fee upon delivery. Each letter was actually "registered mail," since the receiver was required to sign his own name in a rubber stamped space on the envelope, remove the contents, and return the envelope to the Scout as a receipt for delivery. Because of great intrigue and distrust of political enemies each Sea Scout had his signature on approved lists to be compared by the government officials before they accepted the mail and disclosed their identity. The Scouts, therefore, had to sign their names on the envelopes first, for this proof as official messengers. Forgeries of the stamps and envelopes are known and are crudely made. Post cards were printed from the 10 haleru plate and are very rare. Both stamps were overprinted

on December 21, 1918 "Prijezd Presidenta Masaryk" for one day of postal use (means arrival of President Masaryk). Only 600 copies of each were unofficially printed and are therefore, questionable collectors items. (#3 and #4) These are also faked upon genuine stamps, as well as forged stamps. Some catalogs do not list these stamps, since they were issued before the country was organized. Yet, they have seen more postal service than many listed stamps.

## Siam

FEBRUARY 1920

#B12-17. Wild Tiger (Scout) overprint in black ink, type I

#B18-23. Wild Tiger (Scout) overprint in black ink, type II

A visit by Baden-Powell to Siam prior to 1920, resulted in the most enthusiastic support of Scouting by King Rama VI who became the first president of the Siamese Boy Scouts Association. The public paid a tax to support Scouting when nineteen stamps and nine postal cards were overprinted on a supply of 1906-20 stamps and cards honoring their kings. Known as the "Wild Tiger Corps," the emblem of a tiger head and wording in Siamese and English of "Scouts Fund," appears in the rubber stamped surcharge:



TYPE I

B12 — 2s orange brown	+3s for Scouts
B13 — 3s green	+2s for Scouts
B14 — 15s blue	+5s for Scouts
B15 — 1t blue, orange	+25s for Scouts
B16 — 5s on 6s red	+20s for Scouts
B17 — 10s on 12s gray, brown	+5s for Scouts



TYPE II

B18 — 2s orange brown	+3s for Scouts
B19 — 3s green	+2s for Scouts
B20 — 15s blue	+5s for Scouts
B21 — 1t blue, orange	+25s for Scouts
B22 — 10s on 12s gray, brown	+5s for Scouts
B23 — 5s rose red	+20s for Scouts

(continued)



**Siam** (continued)



บำรุงเสอหม  
  
 SCOUT'S FUND.

**TYPE III  
 DECEMBER 1920**

B24-30. Wild Tiger (Scout) overprint in blue/or red ink, type III

These stamps were all overprinted from metal type on the 1920 stamps showing King Vajirayudh:

Color Stamp	Color Paper	Color Overprint
B24—2s brown	yellow	blue
B25—3s green	green	red
B26—5s red	pink	blue
B27—10s black & brown	white	red
B28—15s blue	blue	red
B29—25s brown	white	blue
B30—50s orange & black	white	red

There are fake overprints on genuine stamps and cards. Very few covers have ever been seen and are auction items.

B12-17 exists cancelled on sheets of telegraph forms.

B16 exists with an inverted overprint: auction priced.

B25 exists with the bottom line of the overprint missing that reads: "Scouts fund" (bottom row of stamps on the sheet): auction priced.

Commercial mail and registered mail covers with other Siam stamps are more apt to be genuine.

Blocks of four can be found in all three types. The hand canceling of B12-23 shows the overprinting at different angles and shades of light and dark rubber stamp inking.



**Hungary  
 APRIL 27, 1925**

#B85. 1000 korona. Brown. Lithographed. 133,738

Hungary has the honor of being the first country to picture a Boy Scout on a postage stamp. One of eight in a set of sport stamps, the others show athletes skiing, diving, fencing, soccer, skating and hurdling. The cost was double face value plus 10% and represented income for these activities as well as Scouting. A four line inscription on the reverse side, certifies this cost. There are interesting athletic cancellations including an elusive Scout badge cancel. First day covers are rare auction items. Also imperforate. Designed by F. Helbing. The eight stamps were valid for postage only until Dec. 31, 1925.



**Romania  
 JULY 8, 1931**

#B26-30. Photogravure

Color	+ for Scouts
B26 red	1-leu +1
B27 green	2-lei +2
B28 blue	3-lei +3
B29 gray	4-lei +4
B30 brown	6-lei +6

Romania issued the first set of stamps picturing Scout activities. Because of the interest of Prince Nicholas, Chief Scout of Romania, this set recognizes the Boy Scout Exposition (inscription at the bottom of each stamp). The tent scene shows Scouts cooking and camping, one pictures a Scout rescuing a child, and the 2 lei views a boy not in uniform being invested as a Tenderfoot Scout. The highest two values show Prince Nicholas and King Carol II both in Scout leaders' uniforms.

Fake cancellations known: Timisoara, and Bucuresi. 200,000 sets were printed by the Government Printing Works, Bucharest. Siret-Bucovina believed to be genuine.



**Romania  
 JUNE 8, 1932**

#B31-36. Photogravure

Color	+ for Scouts
B31 green	25 bani + 25 bani
B32 blue	50 bani + 50 bani
B33 d. green	1 leu + 1 leu
B34 orange	2 lei + 2 lei
B35 blue	3 lei + 3 lei
B36 brown	6 lei + 6 lei

Sibiu was the location for the Romanian National Scout Jamboree in 1932, when a special set of stamps selling at double face value was issued for the benefit of Scouts. Their Scout badge appears in the lower corners of five values except for the 50b with a Scout signaling in Semaphore code. The other stamps show Scouts camping, cooking and on the 1 leu a Scout is stalking. King Carol II is shown on the two higher values, one with Prince Michael who became very interested in the Scout activities.

Fake cancellations are known: Timisoara and Bucuresi. Designed by Stefan Constantescu. 150,000 sets printed by the Government Printing Works, Bucharest.





Republic of Cyprus  
with Anniversary  
of the Boy Scout's Organisation in Cyprus  
1913 - 1963



PRINTED IN GREECE



# Topical Collecting: Scouts on Stamps

Many people collect stamps that are related to a specific topic, such as airplanes, flowers, horses, etc. The topic of this collection is Boy Scouts and Girl Scouts on stamps of the world.

## ROMANIA

July 8, 1934



Scouts Camping



Semaphore Signals



Stalking



Cooking



King Carol II



King Carol II & Prince Michael

## NETHERLANDS

April 1, 1937



Netherlands Scout Badge



Symbolic Flags & Drummer



Statue of Greek god Hermes

The 5th World Scout Jamboree, held in Vogelenzang, from July 31 to August 9, 1937, was honored with these stamps. 29,000 Scouts attended from 54 countries. A special Scout badge cancel was used during the Jamboree. Below the frame of each stamp appears "Geldig Tot En Met" (valid until) and the date "31 December 1937". Designed by Pijke Koch.

The special set of semi-postal stamps issued for the 1st Romanian National Scout Jamboree in June, 1932, at Sibiu, was overprinted in July, 1934, to honor the 2nd Jamboree at Mamaia. The stamps sold at double face value with half the cost for the benefit of Scouting. The Romanian Scout badge appears in the lower corners of five of the stamps.

# Topical Collecting: Scouts on Stamps

## PHILIPPINES

July 17, 1959



### COMMEMORATING THE 10<sup>TH</sup> WORLD JAMBOREE

MAKILING NATIONAL PARK, LOS BAÑOS, LAGUNA, PHILIPPINES, JULY 17 TO 26, 1959

P 4.00

Issued to honor the 10th World Jamboree held in Makiling National Park, Laguna, near Manila, July 17-26, 1959. Final designs were based on entries submitted to the Boy Scouts of the Philippines. The souvenir sheet is made up of two semi-post and three air semi-post stamps. The surtax was to finance the Jamboree. The Jamboree emblem is present on each stamp and in the margin of the souvenir sheet.

In 1979, the 1959 souvenir sheet was surcharged as airmail and overprinted to commemorate the 1st Scout Philatelic Exhibition and the 25th anniversary of the 1st Philippine National Jamboree.



COMMEMORATING THE  
25<sup>TH</sup> ANNIVERSARY  
1<sup>ST</sup> NATIONAL JAMBOREE  
Balara, Quezon City



1<sup>ST</sup> SCOUT PHILATELIC  
EXHIBITION  
JULY 4 TO 14, 1979  
Metro Manila, North Council

July 4, 1979

# Topical Collecting: Scouts on Stamps

CANADA

TRINIDAD & TOGABO

April 20, 1960



Girl Guide Badge

April 4, 1961



Scouts & Map

Honoring the 50th year of Girl Guides in Canada, this stamp depicts their badge and the motto "Be Prepared" in French and English. Organized in England in 1909, Canada began their Girl Guides in 1910 at St. Catherines, Ontario. Design by Helen Fitzgerald.

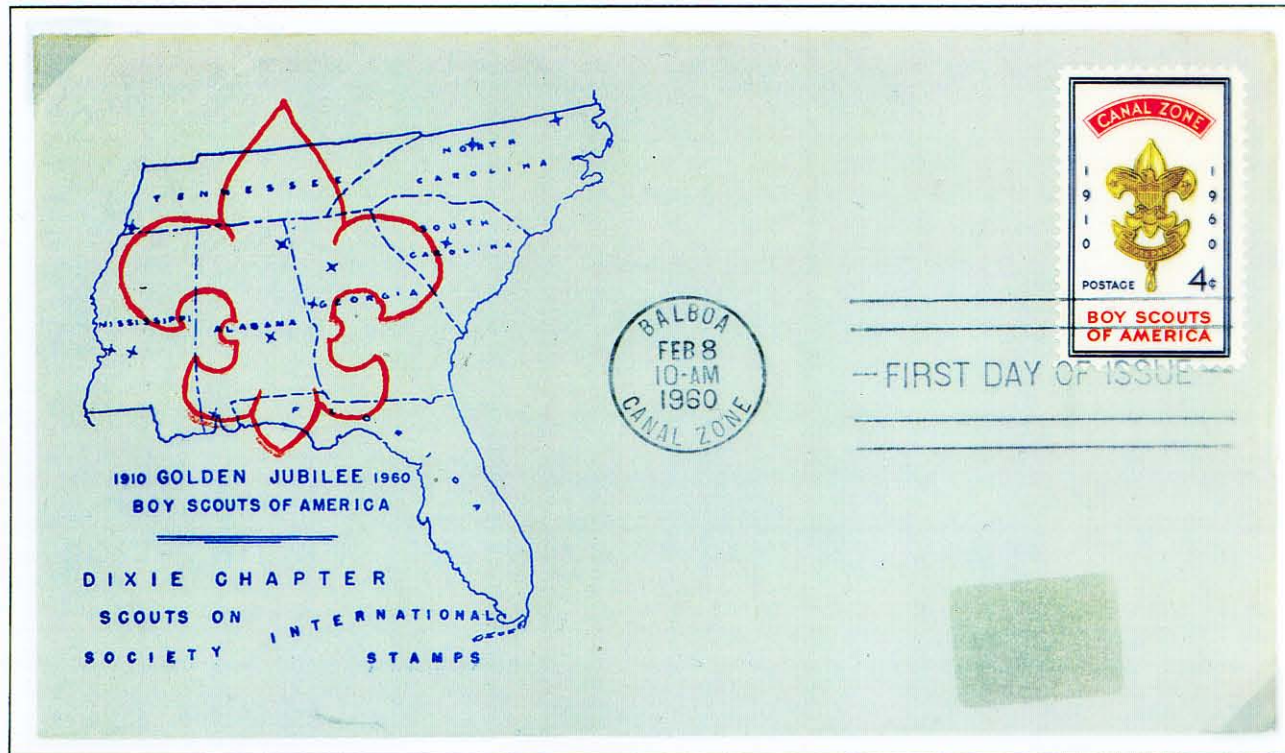
Because the stamps were printed using two runs through the press, one for each cover, mis-registrations can occur. These stamps show offsets from lower left through center to upper right.

These stamps commemorate the 2nd Caribbean Jamboree held at Valsayn Park, Trinidad, on April 4-14, 1961. The design depicts Scouts of different races, the shapes of Trinidad & Tobago, and the Queen's Silver Wolf award. It reflects the friendships made at the Jamboree. The entire proceeds of the sale of these stamps went to the Boy Scouts Association. The stamps were printed by Harrison and Sons, Ltd., London.

# Topical Collecting: Scouts on Stamps

## CANAL ZONE

February 8, 1960



First Day Cover sponsored by the Dixie Chapter, Scouts On Stamps Society International



Honoring the 50th anniversary of Boy Scouting in the USA. Designed by Gerald A. Doyle, Jr. Badge engraved by Richard Bower; lettering by Robert Jones. Produced by the Bureau of Engraving and Printing, Washington, DC. 76,840 first day covers were cancelled at Balboa, CZ, a record more than double any previous stamp.

# Topical Collecting: Scouts on Stamps

GREECE

April 23, 1960



Reforestation by Scout & Cub Scout



Scouts map reading, camping



Boy Scout, Sea Scout, & Air Scout



Scout flag of Greece & Medal of Military Merit



Scout as St. George & dragon



Oath by Scout & ancient youth



Scout first aid during earthquake



Prince Constantine in Chief Scout Uniform

The 50th anniversary of Greek Scouting is celebrated by this colorful set of eight stamps. April 23 also being the day of St. George, patron saint of Scouting, he is depicted in the 20 lepta stamp. The stamps were designed and engraved by A. Tassos and printed by Aspicti-Elka, Graphic Arts Co., Ltd., Athens. Only the 6 drachmae value was sold for postage; the others only sold in complete sets. All were valid for postage until October 22, 1960.

The information about the stamps in this display was obtained from the 7th Edition of the Scouts On Stamps of the World album by Howard J. Kaplan and William E. Hoffmann, published by Scouts On Stamps Society International, and copyright 1986. Used by permission.

# Topical Collecting: Scouts on Stamps

UNITED STATES OF AMERICA



February 8, 1960, first day cover of the stamp honoring the 50th anniversary of Boy Scouting in the USA. Designed by Normal Rockwell. Vignette engraved by C. A. Brooks; lettering by G. L. Huber. Included is the June 30, 1950 stamp honoring the 40th anniversary which was designed by C. R. Chickering and engraved by E. H. Helmuth. Both stamps produced by the Bureau of Engraving and Printing, Washington, DC.